

The image features a large-scale offshore wind farm in the background, with numerous white wind turbines on a dark blue sea under a clear sky. A prominent graphic element consists of multiple green lines that originate from a central point above the RWE logo and fan out to connect various turbines across the horizon, symbolizing a supply chain or network. The RWE logo itself is in a bold, dark blue, sans-serif font.

RWE

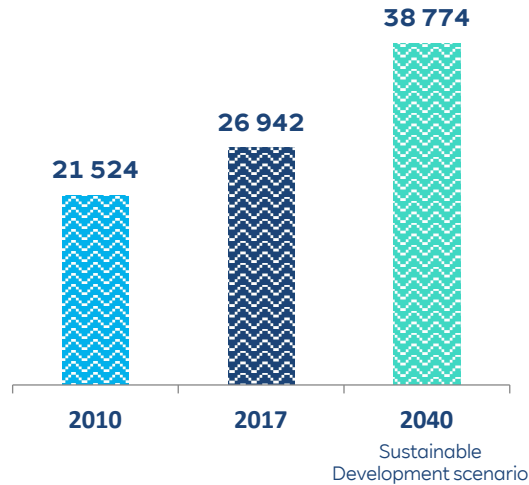
Offshore Wind supply chain under pressure

Wind Finland Offshore, 4th of May 2023

How to meet tomorrow's challenges today.

Global increase in electricity demands

Electricity generation in TWh¹



Industry trends



Electrifying
mobility



Electrifying the
industry



Electrifying the
heating supply

Key climate protection targets



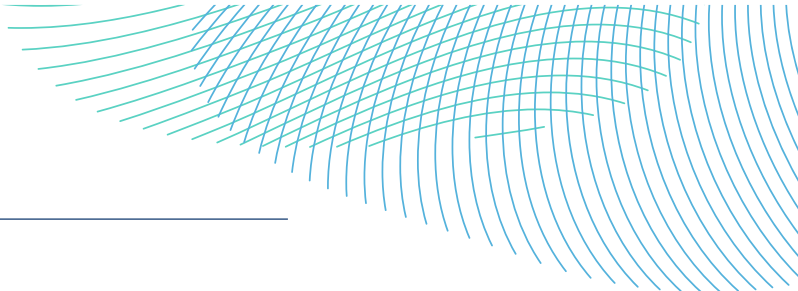
Achieving the climate targets domestically and in EU

The Paris Agreement²
To limit global warming to far below 2°C



Energy security and a competitive industry

We are building Denmark's largest offshore wind farm to date



Thor offshore wind farm at a glance:



- More than **1,000 MW** of capacity, to go into full operation in 2027 at the latest. **Green electricity for over 1 million Danish households**
- **Preferred suppliers for main components selected**
- **Siemens Gamesa will deliver 72 turbines**, installation to start in 2026. **50% of turbines** to be equipped **with CO2-reduced towers**

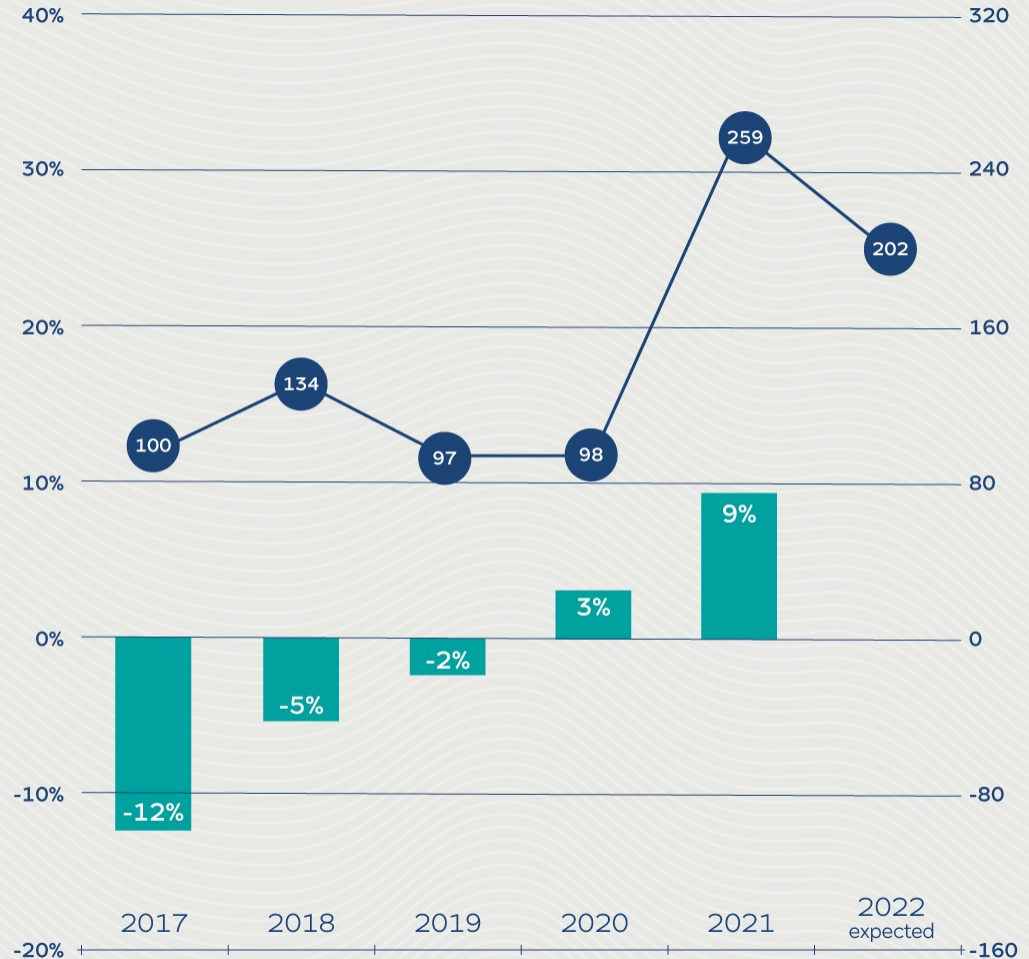


- **Operation and Maintenance Base in Thorsminde:** Port offers both the shortest sea and fastest air routes to Thor offshore wind farm. We intend to create **up to 60 jobs** there.
- **We work closely with the local supply chain and communities we are active in and look to create local value**



Technology cost trends & key material prices for wind turbines, 2017-2022

- Annual change in technology costs
- Steel prices (Index: 2017 = 100)



Offshore build-out in Europe requires significant capacity increase on key components & services

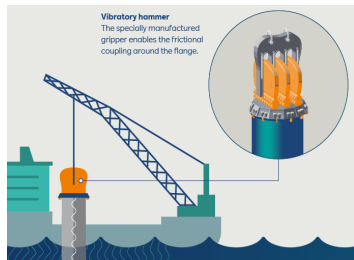
Category	Current capacity		Capacity required to meet 2030 targets:
Turbines 	700 units/year	↗	Up to 1,300 units/year (*2)
Foundations (bottom fixed) 	Up to 300 units/year	↗	Up to 1,200 units/year (*4)
Foundations (floating) 	Up to 10 units/year	↗	Up to 100 units/year (*10)
Vessels (installations, cable) 	68 Vessels in operation	↗	124 Vessels in operation (*2)

At the forefront of innovation in Offshore Wind

Technological Challenges and Opportunities

Our offshore innovation projects support our sustainability strategy ...

... and go beyond conventional applications



Innovations

Realizing large scale commercial floating wind farms.

Reducing noise and structural impact

and at the same time significantly speed up the installation process

Offshore hydrogen

We are driving the offshore hydrogen transition, with our ambition to enable offshore production of hydrogen

Supply chain

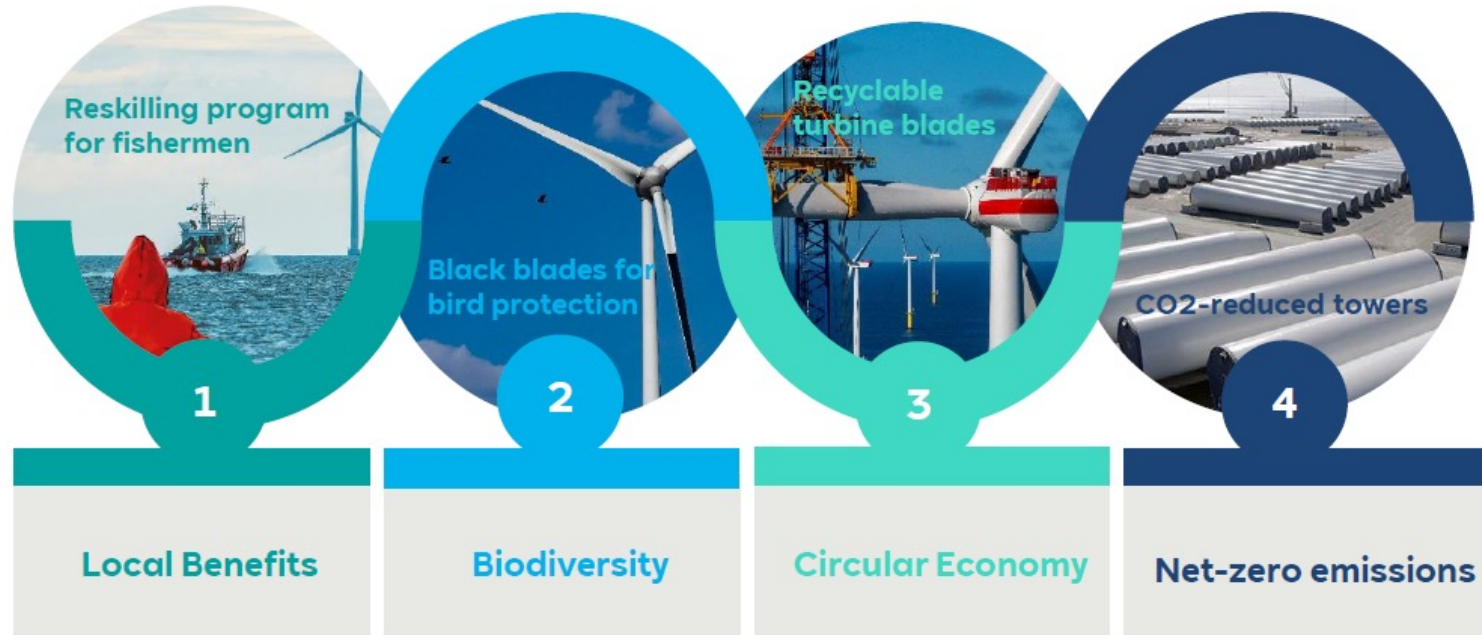
Due to high demand it is challenging to acquire the components needed for the energy transition

Bubble curtains, noise prevention

State of the Art Ecological Innovation in offshore wind.

We are fully committed to make wind power even more sustainable

As a major player in the Global Energy Market, we are aware of our responsibility



Action plan to support European offshore supply chain

Support the fast ramp-up of the European supply chain

- Masterplan for relevant materials
- Provide support to ports & OEMs to expand capacity

Clear pathway and logic for auctions

- Clear auction schedules and volumes must be set to increase investment security
- 2-sided CfDs as a key pillar but with indexation

Ensure build-out of offshore wind

- Implementing meaningful auction prequalification
- Introduce transparent and objective qualitative criteria which support sustainability

Introduce supportive qualitative criteria

Thank you!



**Energising
the future.
For 125 years.**

RWE

This document may contain forward-looking statements. These statements are based on the current views, expectations, assumptions and information of the management, and are based on information currently available to the management. Forward-looking statements shall not be construed as a promise for the materialization of future results and developments and involve known and unknown risks and uncertainties. Actual results, performance or events may differ materially from those described in such statements due to, among other things, changes in the general economic and competitive environment, risks associated with capital markets, currency exchange rate fluctuations, changes in international and national laws and regulations, in particular with respect to tax laws and regulations, affecting the Company, and other factors. Neither the Company nor any of its affiliates assumes any obligations to update any forward-looking statements.